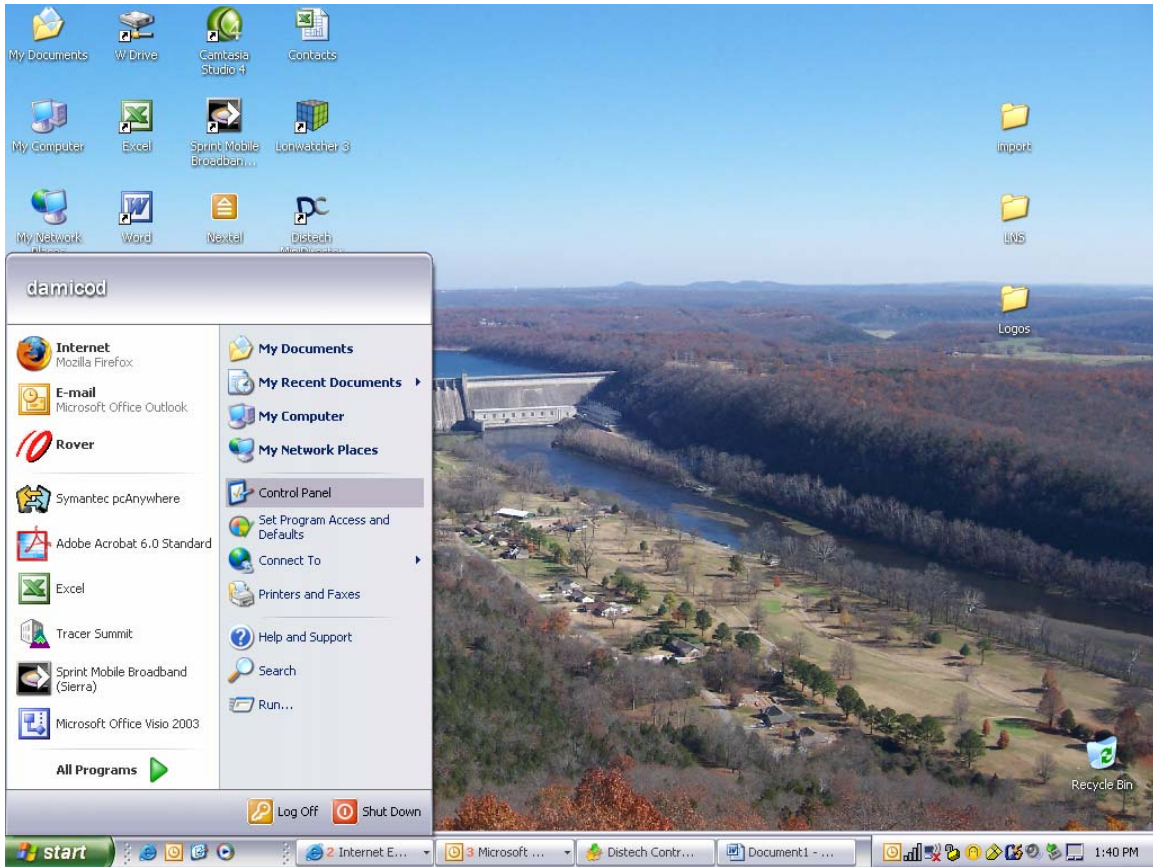
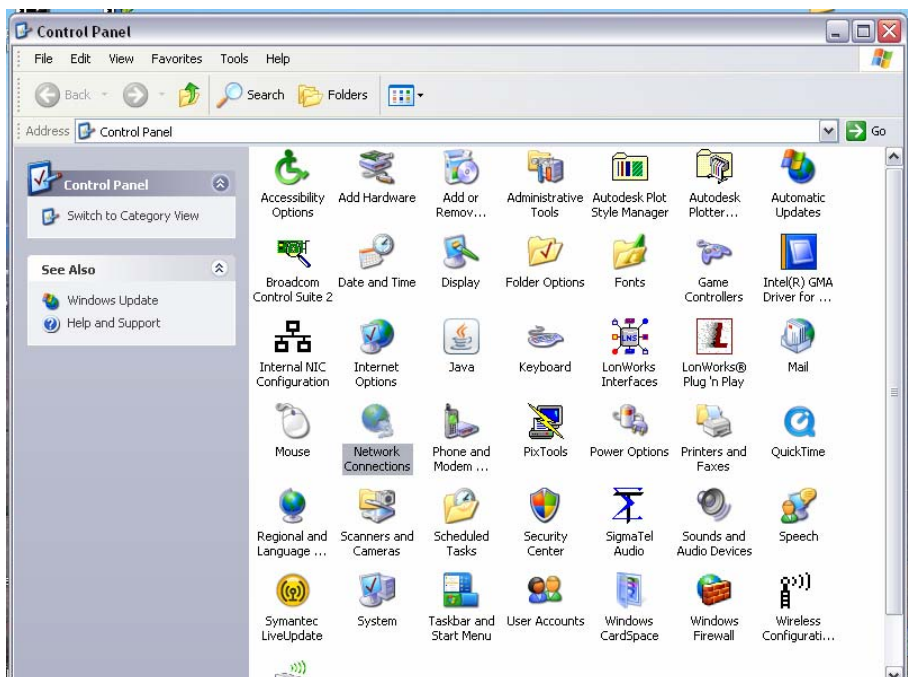


MANUALLY SETTING YOUR COMPUTER IP ADDRESS

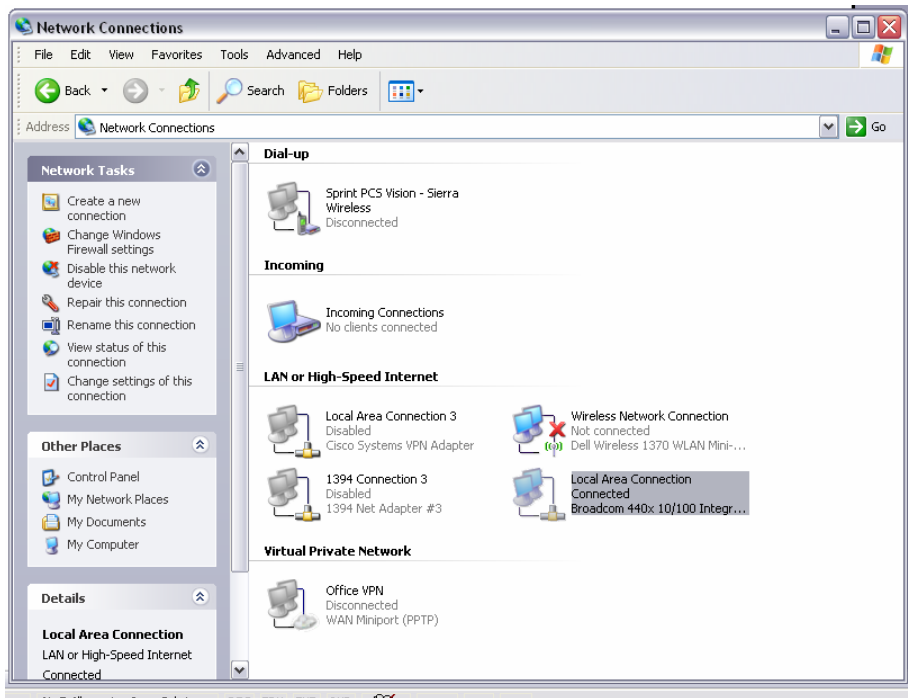
STEP 1: CLICK ON THE START MENU IN YOUR TOOL BAR AND CLICK ON “CONTROL PANEL”



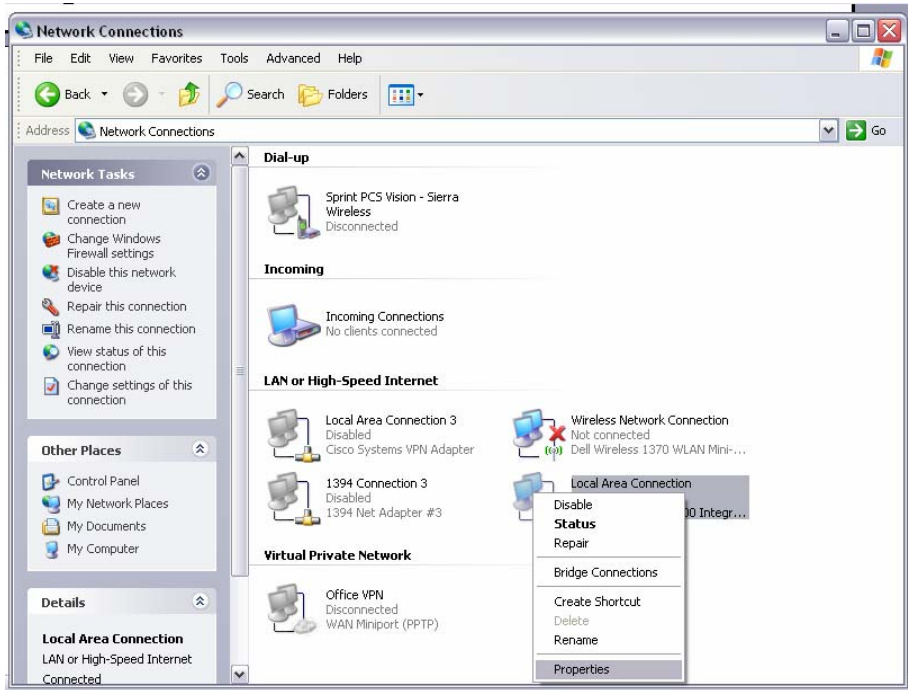
STEP 2: DOUBLE CLICK ON NETWORK CONNECTION ICON



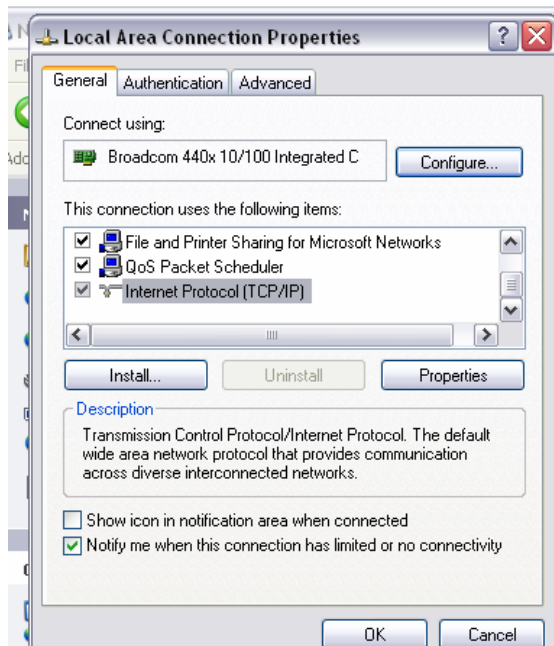
STEP 3: FIND THE COMPUTERS LOCAL AREA CONNECTION AND **RIGHT CLICK** FOR DROP DOWN MENU.



STEP 4: SCROLL DOWN TO PROPERTIES ON THE DROP DOWN MENU AND **CLICK** ON IT.



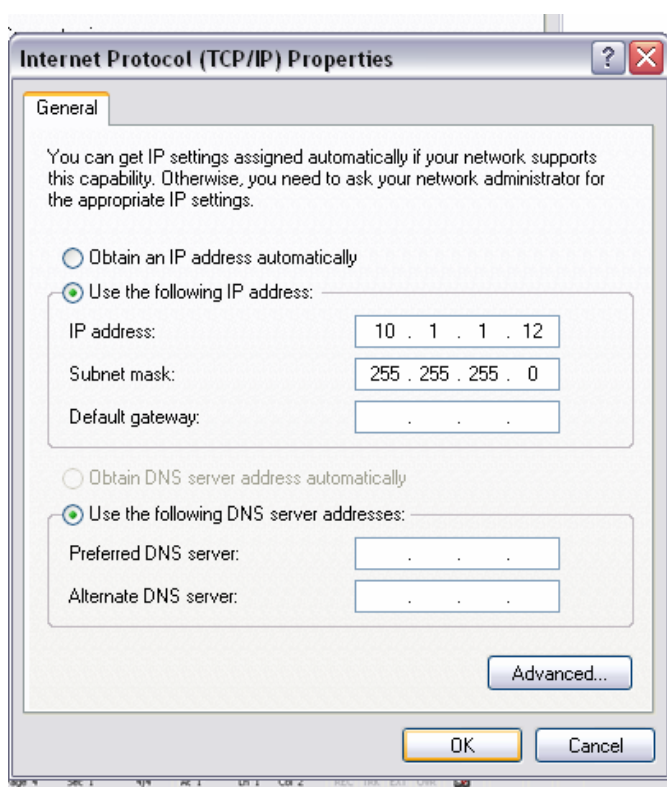
STEP 5: IN THE PROPERTIES WINDOW FIND AND HIGHLIGHT THE “INTERNET PROTOCOL(TCP/IP)” AND CLICK ON THE PROPERTIES TAB.



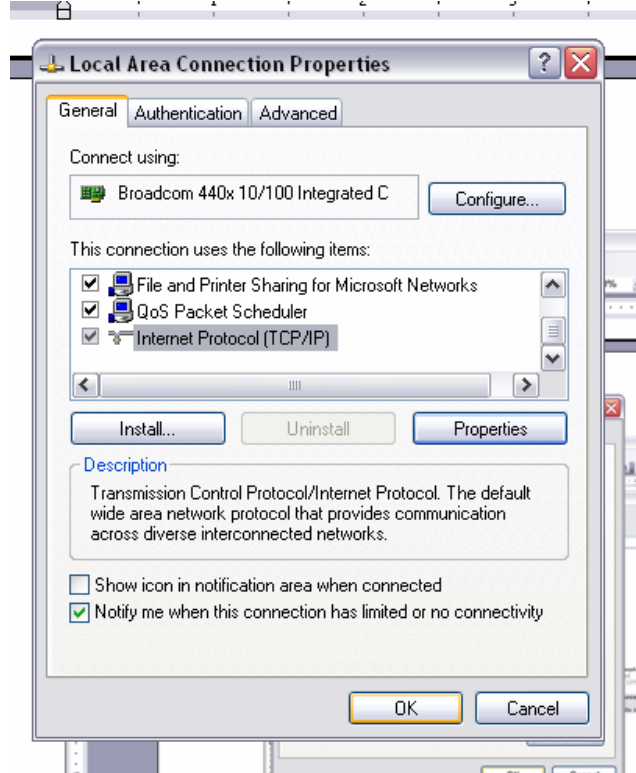
STEP 6: IN THE TCP/IP PROPERTIES CHECK THE USE THE FOLLOWING IP ADDRESS AND MANUALLY ENTER AN IP ADDRESS THAT IS CLOSE TO THE JACE OR COMPUTER YOUR TRYING TO COMMUNICATE TO.

EXAMPLE: IF THE OTHER DEVICE’S IP ADDRESS IS 10.86.23.6 THEN YOU SHOULD ENTER YOUR IP ADDRESS AS 10.86.23.5

THE SUBNET SHOULD ENTER AS THE DIAGRAM. LEAVE THE REST BLANK. AFTER ENTERING CLICK ON THE “OK” BUTTON.



STEP 7: CLICK ON THE “OK” BUTTON AND WAIT TILL THE HOUR GLASS ICON GOES AWAY.



DONE