

EC-RTU

**DISTECH
CONTROLS™**

Building Open Control Products

EasyControls™ LONMARK® “3.3” Certified Free Programmable Roof Top Unit Controller

- 8 Universal Inputs
- 6 Digital (relays) Outputs
- 2 Tri-mode Analog Outputs (0-10 Volts, PWM or digital 0-12 Volts)



Applications

- Control of equipment such as: roof top units, multistage air handling units, etc...
- Control of many other types of HVAC, lighting equipment, as well as power measurement applications.

Features

Interoperability

- Based on LONWORKS® technology for peer-to-peer communication between controllers
- LONMARK® certified according to the Interoperability Guidelines Version 3.3

Hardware

- 8 universal inputs (jumper selectable)
- 6 digital outputs
- 2 analog outputs
- Status indicator on each output
- Analog outputs and power supply are fuse protected
- 128K Flash memory for the configuration and trending of up to 12 000 events
- Battery back-up for clock with fifteen year lifespan

Software

More than 60 network variables including:

- 18 NVIs, changeable type, changeable length
- 18 NVOs, changeable type, changeable length
- Support of fan-in binding for zoning applications
- Each object is configurable and programmable through their own LNS® plug-in

Free programmable object

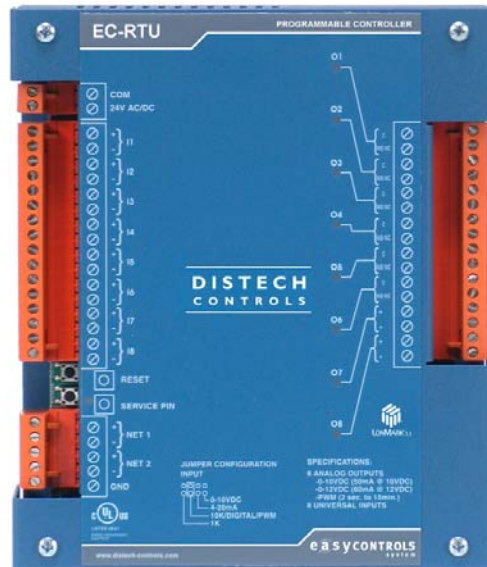
- Configuration, code and label stored in the controller itself, for advanced backup purposes
- Many programming features available such as PID loops, timers, optimum start
- View all internal points (e.g. constants, variables, ...) using 10 UNVT of 15 values each

4 Scheduler objects

- All schedules are stored in Flash memory
- Schedule network variables are of changeable type and length
- Seven weekday templates per scheduler
- Six configurable events per day, per schedule
- Four holiday templates per schedule
- Schedules can be edited locally on device

Real-time clock object

- Allows configuration of daylight saving time
- Accurate timekeeping for controller applications



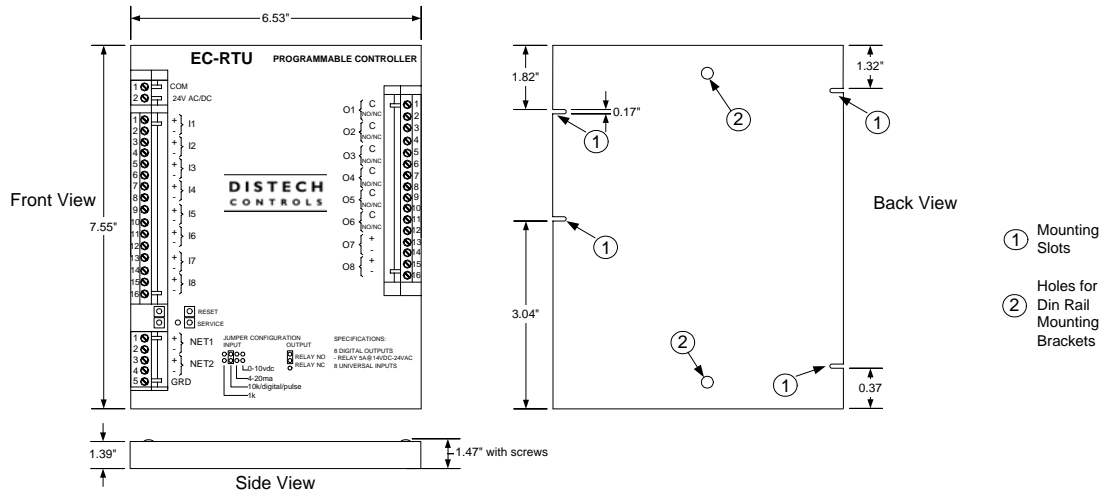
The EasyControls™ EC-RTU controller is a microprocessor based free programmable controller designed to control various HVAC applications. Moreover, it is suitable for any lighting control and power measurement application.

The EC-RTU controller uses the LONWORKS communication protocol and can be programmed using the Free Programming plug-in through any LNS based software such as Distech Controls LonWatcher. The EC-RTU is LonMark® certified using the Sensor profile (#1) for its input objects and the Actuator profile (#3) for its output objects.

At Distech Controls, we understand the needs of system integrators and installers. This is why we have made ease of use the primary feature of all our products. The Free Programming plug-in is unique in the controls industry because it combines an easy to use graphical interface with the power and flexibility of a code editor and compiler. Distech Controls' Free Programming plug-in uses a unique and simplified version of BASIC that we have developed in-house and that is custom made to suit control requirements. Through the original combination of built-in functions and an easy to use Graphical User Interface (GUI), it offers you the very best in modular control programming. Also available for use with the EC-Net platform, the Distech Controls Shadow Objects and modules allow you to control and monitor the EC-RTU free programmable controller.

The EasyControls product line is built to meet rigorous quality standards and carries a two-year warranty. The complete line of EasyControls controllers is designed for use with any LNS based and/or any other open and interoperable system – such as EC-Net. This provides both the contractor and the end user with the flexibility of using “best of breed” products in system design.

Product Specifications



| Power | | Inputs | |
|--------------------------|---|--------------------------|--|
| Voltage | 24VAC/DC; $\pm 15\%$, 50/60HZ, Class 2 | Quantity | 8 |
| Protection | 5 Amp removable fuse | Input Types | (jumper selectable) |
| Typical | 6 VA | -Voltage | 0-10 VDC, Accuracy $\pm 0.5\%$ |
| Maximum | 16 VA | -Current | 4-20 mA |
| | | -Digital | Dry Contact |
| Environmental | | | 200ms min ON (without log) |
| Operating Temperature | 0°C to 70°C, 32°F to 158°F | | 350ms min OFF (without log) |
| Storage Temperature | -20°C to 70°C, -4°F to 158°F | | 350ms min ON/OFF (with log) |
| Relative Humidity | 0 to 90% Non-condensing | -Resistor: | |
| General | | <i>Thermistor</i> | Type 2,3 10K Ω @ 25°C, 77°F |
| Processor | Neuron [®] 3150 [®] ; 8 bits; 10MHZ | | Range -40°C to 150°C, -40°F to 302°F |
| Memory | Non-volatile Flash 64K (APB application) | <i>Platinum</i> | Accuracy: $\pm 0.5^\circ\text{C}$; $\pm 0.9^\circ\text{F}$ |
| | Non-volatile Flash 128K (Storage) | | Resolution: 0.3°C; 0.54°F |
| Communication | LonTalk [®] protocol | | RTD 1K Ω @ 0°C; 32°F |
| Transceiver | TP/FT-10; 78 Kbps | <i>Potentiometer</i> | Range -40°C to 75°C; -40°F to 167°F |
| Clock | Real-time clock chip | | Accuracy: $\pm 1.0^\circ\text{C}$; $\pm 1.8^\circ\text{F}$ |
| Battery (for clock only) | CR2032 lithium battery | | Resolution: 0.1°C; 0.18°F |
| Status Indicator | Green LEDs on outputs | Input Resolution | Translation table configurable on several points, Accuracy $\pm 0.5\%$ |
| | | | 12 bits analog / digital converter |
| Enclosure | | Outputs | |
| Material | Metal 18 AWG | Quantity | 7 |
| Color | Blue casing & orange connectors | 6 Digital | Relay 5 Amp @ 14VDC-24 VAC, $\pm 15\%$, 50/60HZ |
| Dimensions w/ Screws | 7.55" x 6.53" x 1.47" (192x166x37mm) | | NO/NC jumper selectable |
| Shipping Weight | 2.40 lbs (1.09 kg) | 2 Tri-mode Analog | 0-10 VDC (linear), PWM or digital |
| | | | 0-12 VDC |
| | | | 60 mA maximum @ 12 VDC (60°C; 140°F) |
| | | | Maximum load 200 Ω |
| | | | Auto reset fuse: |
| | | | 60mA @ 60°C; 140°F |
| | | | 100mA @ 20°C; 68°F |
| | | Analog Output Resolution | 8 bits digital / analog converter |

Product Specifications

Agency Approvals

| | |
|--------------|---|
| CE -Emission | EN55022:1998 class B (conducted & radiated) This device complies with FCC rules part 15 class B |
| -Immunity | EN61000-4-2: 1995, level 3 in air EN61000-4-2: 1995, level 2 by contact EN61000-4-3: 1996, level 2 EN61000-4-4: 1995, level 2 EN61000-4-6: 1996, level 2 ENV 50204 : 1995, level 2 |
| UL Listed | UL916 Energy management equipment |

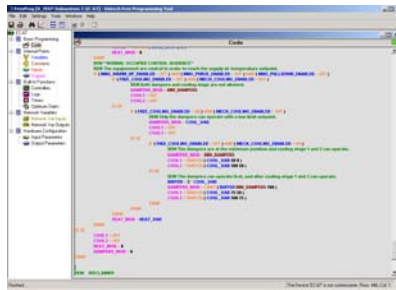
Mounting Options

| | |
|-------------------|--|
| Mounting Slots | See previous figure for position of mounting slots |
| Mounting Brackets | Optional din rail mounting brackets installed by Distech Controls when ordered |



Software Preview

LNS Configuration Plug-in*



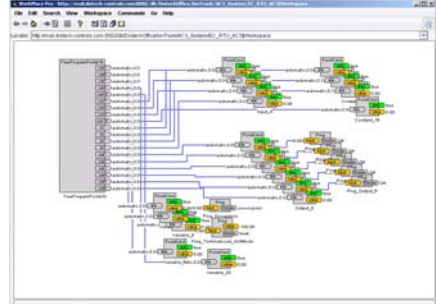
The Free Programming Plug-in is unique in the controls industry because it combines the easy to use graphical interface with the power and flexibility of a code editor and compiler. Distech Controls' Free Programming Plug-In uses a unique and simplified version of BASIC that we have developed in-house and that is custom made to suit control requirements.

LNS Scheduler and Real-time Clock Plug-in*



This plug-in allows you to easily configure a weekly-based schedule and a special day schedule for holidays. Easily add and remove the special day event into the calendar by a simple click. Manage real-time clock and daylight saving time for use with any device on the network.

EC-Net Free Programmable Shadow Object for Niagara Framework



Designed for use with the Niagara Framework, the EC-Net free programmable shadow object allows you to add a free programmable device on your network for monitoring and control purposes.

* LNS Plug-ins can be used with any LNS based network management and GUI tools, such as Distech Controls' LonWatcher or LonDisplay.

Recommended Peripherals

Recommended Optional Accessories

Temperature Sensors



| | |
|------------------|--|
| EC-SENSOR | Room sensor |
| EC-SENSOR-LO | Room sensor with LED and Override push button |
| EC-SENSOR-SLO-CW | Room sensor with LED, Override push button and setpoint adjustment (cool/warm) |
| EC-SENSOR-SLO-C | Room sensor with LED, Override push button and setpoint adjustment (Degrees C) |
| EC-SENSOR-SLO-F | Room sensor with LED, Override push button and setpoint adjustment (Degrees F) |
| EC-SENSOR-AVG | Averaging room sensor, no setpoint (Up to 3 in parallel) |
| EC-SENSOR-AVG-LO | Averaging room sensor with LED and Override push button |

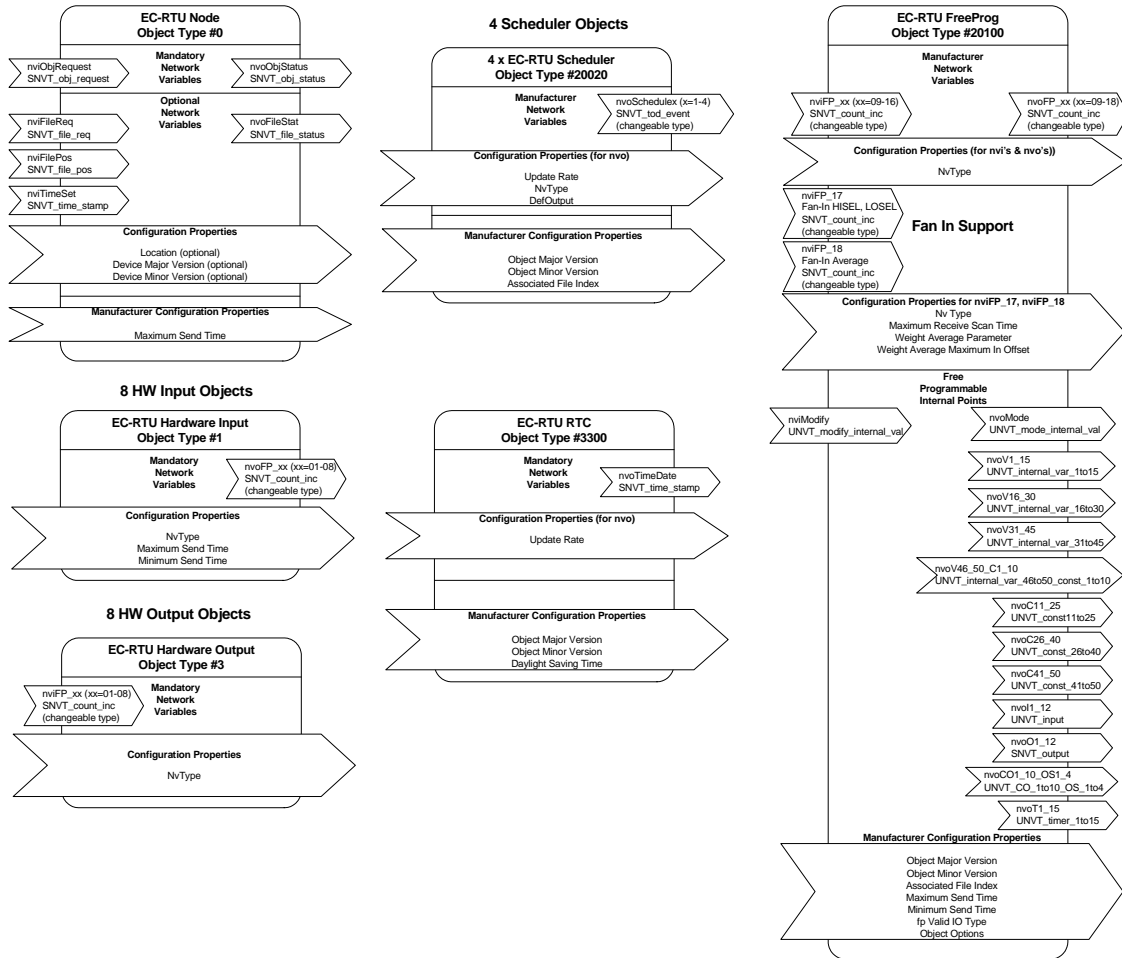
Other Peripherals

In addition to the Distech Controls EasyControls product line, we invite you to take advantage of our array of peripheral product offering. We are confident our peripheral product offering can:

- Facilitate your ordering process;
- Simplify your search for equal or better prices on all items;
- Help standardize your purchasing process by providing quality and performance-proven products.

Please contact sales@distech-controls.com for a complete list of available products and peripherals.

LONMARK® Objects & Network Variables



Specifications subject to change without notice. EasyControls, Distech Controls logos are trademarks of Distech Controls, Inc.; LONWORKS, LONMARK, LonTalk, LNS and LON are registered trademarks of Echelon Corporation; Niagara Framework is a trademark of Tridium, Inc.



05DI-DSECRU-20

EC-RTU

DISTECH CONTROLS

Tel. Toll-free North America: 1-800- 404-0043

Tel. International: (450) 444-9898

<http://www.distech-controls.com>

sales@distech-controls.com